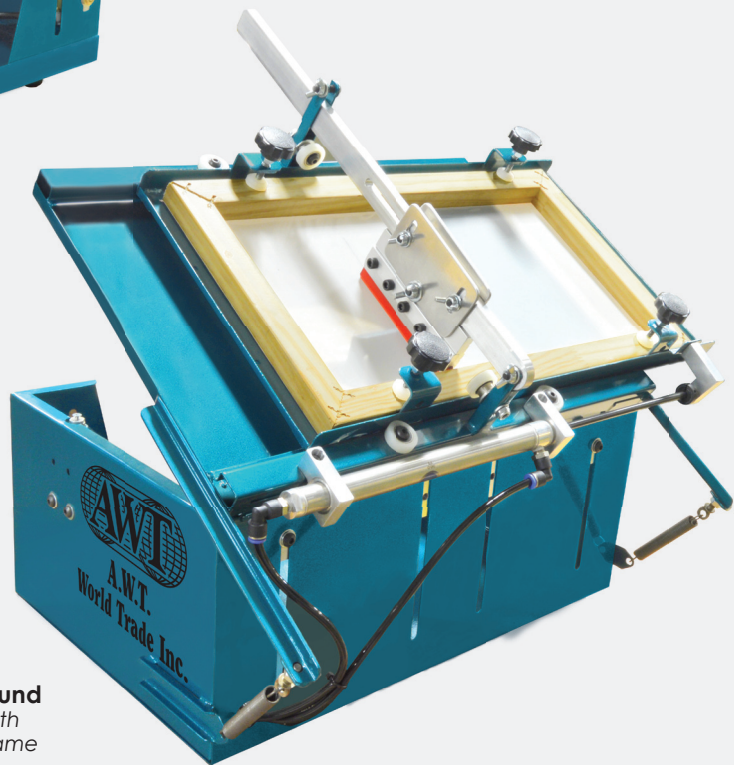


# PRINT-A-ROUND™

Economical, Portable 3D Printer



**Pneumatic  
Print-A-Round**  
*Shown with optional  
roller attachment*




**Print-A-Round**  
*Shown with  
optional frame*




 4321 N. Knox Ave., Chicago IL, 60641

 [www.awt-gpi.com](http://www.awt-gpi.com)

 [sales@awtworldtrade.com](mailto:sales@awtworldtrade.com)

 773.777.7100

 773.777.0909

# PRINT-A-ROUND™

## Economical, Portable 3D Printer

### ADVANTAGES

- High-quality printing on three-dimensional objects in a compact, affordable package
- Pneumatic operation delivers consistent results at higher production rates
- Ideal for decorating can huggers, mugs, tumblers, and certain types of bottles
- Optional roller attachment facilitates easy printing on pens, pencils, or larger diameter objects
- Perfect for promotional campaigns, fundraising projects, incentive programs
- Positive locking pin for precise multi-color printing
- Compact and portable for any size print shop
- Built for years of reliable operation

### Standard Features

- 5" squeegee with double-beveled blade for 3D printing
- Micro switch-activated print action
- Frame holder works with aluminum or wood frames up to 10¼ x 18½" O.D. x 7/8" H (26 x 47 x 2.2cm)
- Height-adjustable holding bar works with optional tooling
- Adjustable stroke length
- Positive locking pin assures accurate multi-color registration
- Mandrel holding bar supports optional mandrels for mugs, huggers, tumblers and more
- Heavy-gauge sheet metal construction

AWT's Print-A-Round™ Portable 3D Cylindrical Printer offers an economical and versatile way to enter a popular and profitable new dimension of screen printing.

Made in the USA, the Print-A-Round delivers crisp, clear imaging on a wide variety of cylindrical objects. Optional mandrel attachments permit the printing of mugs, can huggers, and tumblers. Optional roller attachments are used to print on pens, pencils and larger diameter objects.

The compact and durable Print-A-Round uses a standard compressed-air connection to automate the print action, ensuring precise image repeatability. Quality, versatility, affordability, and portability make the Print-A-Round a perfect addition to any screen printing workshop or facility.

### SAMPLES OF PRODUCTS THAT CAN BE PRINTED ON THE PRINT-A-ROUND

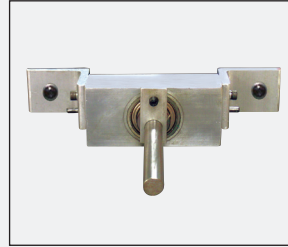


# PRINT-A-ROUND™

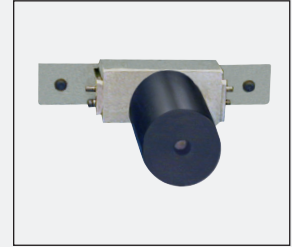
## Economical, Portable 3D Printer

### Options & Accessories

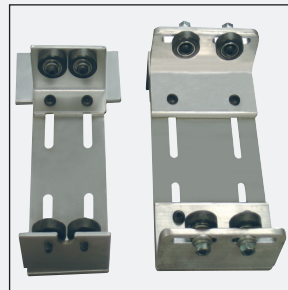
- Can Hugger mandrel
- Mug mandrel with handle attachment (Submit sample for pricing)
- Tumbler mandrel (Submit sample for pricing)
- Roller attachment for pens and other small-diameter objects
- Roller attachment for larger-diameter objects
- Shaft assembly for all printing attachments
- Wood frame 10¼ x 18½" O.D. x 7/8" H (26 x 47 x 2.2cm) without mesh
- Wood frame 10¼ x 18½" O.D. x 7/8" H (26 x 47 x 2.2cm) with mesh (Mesh counts up to 390)
- Mug/cup with handle frame 10¼ x 18½" O.D. x 7/8" H (26 x 47 x 2.2cm) without mesh
- Mug/cup with handle frame 10¼ x 18½" O.D. x 7/8" H (26 x 47 x 2.2cm) with mesh (Mesh counts up to 390)



Shaft assembly



Hugger mandrel on shaft assembly



Roller attachments (small and large available)

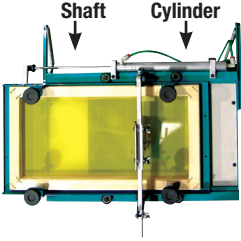
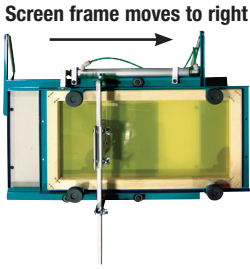
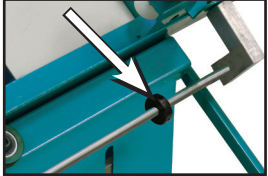
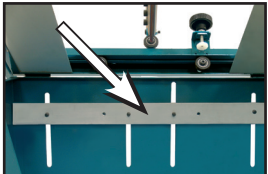


Roller attachment on mounting bracket

### Specifications

CATEGORY NO.	DIMENSIONS (L x W x H)	MAXIMUM SUBSTRATE DIAMETER	MAXIMUM SUBSTRATE LENGTH	MAXIMUM IMAGE SIZE	COMPRESSED AIR REQUIREMENTS	SHIPPING WEIGHT
CP-100E	34 x 24 x 21" (86.4 x 61 x 53.3 cm)	1 to 3¼" (2.5 x 8 cm)	8" (20 cm)	4 x 7" (10 x 18 cm)	20 psi to 40 psi	38 lbs. (17.24 kg)

## Frequently Asked Questions

QUESTION	HOW DOES IT WORK?
<b>ANSWER</b>	<p>A cylinder with an extended shaft is connected to the screen frame holder. When the squeegee lever is pulled down, the micro switch is activated, forcing air into the cylinder. This closes the shaft and pushes the screen frame holder to the right. The pressure of the squeegee against the screen fabric and substrate causes the Print-A-Round action.</p> <div style="display: flex; justify-content: space-around; align-items: center;"> <div style="text-align: center;">  </div> <div style="text-align: center;">  </div> </div>
<b>QUESTION</b>	<b>CAN I PRINT MORE THAN ONE COLOR?</b>
<b>ANSWER</b>	Yes. Be sure to test print before going into production to ensure that your artwork is properly registered.
<b>QUESTION</b>	<b>HOW MANY PIECES (PENS, PENCILS, MUGS, TUMBLERS, ETC.) CAN I PRINT PER HOUR?</b>
<b>ANSWER</b>	This will be determined by the specific print job parameters and the speed of the operator.
<b>QUESTION</b>	<b>CAN THE PRINT-A-ROUND PRINT CONICAL OBJECTS?</b>
<b>ANSWER</b>	It depends on the size and location of the print area. The print area must be fully round. A sample is required.
<b>QUESTION</b>	<b>CAN THE PRINT-A-ROUND PRINT SOFT KETCHUP BOTTLES?</b>
<b>ANSWER</b>	No. An air inflation device is required to print on soft substrates. The Print-A-Round does not offer this option. AWT's American AM-180 offers this option.
<b>QUESTION</b>	<b>IF I CHANGE MUG VENDORS, CAN I USE THE SAME TOOLING?</b>
<b>ANSWER</b>	Only if the new mug is the same size and shape as the one for which the mandrel was originally created.
<b>QUESTION</b>	<b>HOW DO I ADJUST THE STROKE LENGTH?</b>
<b>ANSWER</b>	<p>There is collar located on the extended shaft of the pneumatic cylinder which is held in place with a set screw. The position of this collar on the shaft determines the stroke length. To adjust the stroke length, loosen the set screw to move the cylinder to the desired position, and then retighten the set screw.</p> <div style="text-align: right;">  </div>
<b>QUESTION</b>	<b>WHAT DOES THE STANDARD MANDREL-HOLDING BAR LOOK LIKE?</b>
<b>ANSWER</b>	<p>The height-adjustable holding bar is located on the rear-inside wall of the Print-A-Round. It is designed to hold all available optional attachments.</p> <div style="text-align: right;">  </div>